



Public Health
England

Protecting and improving the nation's health

RESOURCES for the PHE London Region CEV CYP Webinar

Public Health England 16th August 2021

Welcome to the Resources!

Whilst every care has been taken to ensure this is up to date the guidance does change so please make sure you check the NHS, Public Health England and Department for health and Social Care Websites.

Core Covid 19 Guidance

England has moved to Step 4

“Although most legal restrictions have been lifted at step 4, and many people have been vaccinated, it is still possible to catch and spread COVID-19, even if you are fully vaccinated, and we are still in the third wave of this pandemic in the UK.

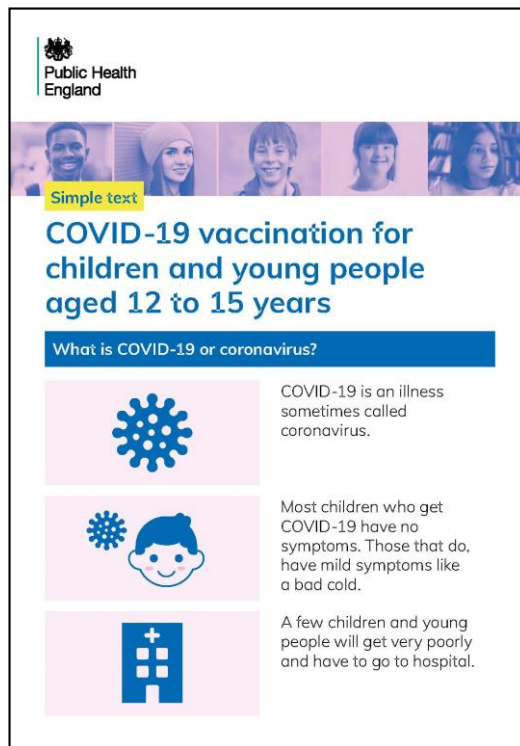
COVID-19 will be a feature of our lives for the foreseeable future, so we need to learn to live with it and manage the risk to ourselves and others.

As COVID-19 restrictions are lifted, it is important that we all use personal judgement to manage our own risk. All of us can play our part by exercising common sense and considering the risks. While no situation is risk free, there are actions we can take to protect ourselves and others around us. Following this guidance will help you stay safe and protect others by controlling the spread. Every action to help reduce the spread will reduce any further resurgence of the virus in the coming months.”

Coronavirus: how to stay safe and help prevent the spread - GOV.UK (www.gov.uk) UPDATED 16th August 2021

Resources

<https://www.gov.uk/government/publications/covid-19-vaccination-resources-for-children-and-young-people>



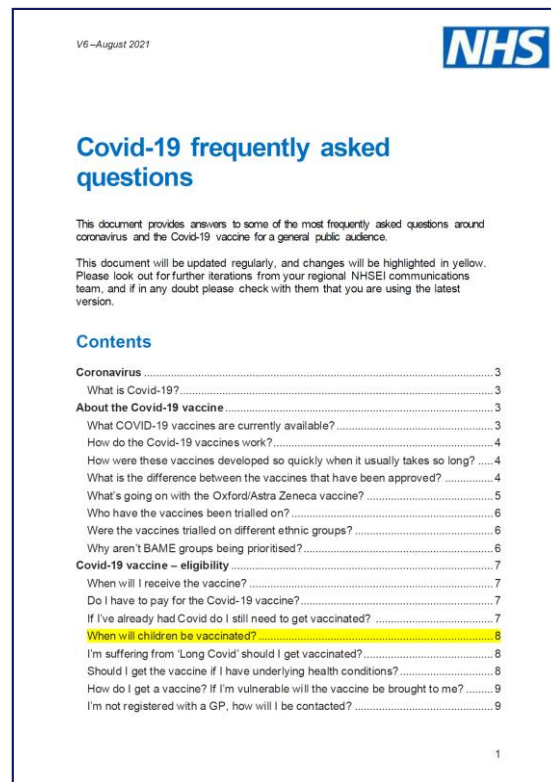
NHS England FAQ on Covid Vaccines

COVID-19 vaccine: frequently asked questions (FAQs)

We have developed a COVID-19 vaccine FAQ document that provides answers to some of the most frequently asked questions about the COVID-19 vaccines for a general public audience. It is updated regularly and new information is highlighted in yellow. The FAQ topics covered are as follows:

- Coronavirus
- About the COVID-19 vaccine
- COVID-19 vaccine – eligibility
- COVID-19 vaccine – timing
- COVID-19 vaccine safety
- COVID-19 vaccine side-effects
- COVID-19 vaccine effectiveness
- COVID-19 vaccine ingredients
- COVID-19 vaccine hesitancy
- COVID-19 second doses

NHS England and NHS Improvement London » COVID-19 vaccine communication materials



NHS England Videos on Covid Vaccines

COVID-19 vaccine: Video Explainers in a wide range of languages

Arabic, Bengali, Gujarati, Igbo, Nepali, Polish, Punjabi, Romanian, Somali, Spanish, Swahili, Tibetan, Turkish, Urdu, Yoruba, Cantonese, Mandarin, Hakka

NHS England and NHS Improvement London » COVID-19 vaccine communication materials



Vaccination for CYP Resources

COVID-19 vaccination for children and young people | RCPCH

Who can get the coronavirus (COVID-19) vaccine - NHS (www.nhs.uk)

NHS COVID Pass - GOV.UK (www.gov.uk)

Information on COVID-19 vaccination: easy-read guide - GOV.UK (www.gov.uk)

NHS England and NHS Improvement London » COVID-19 vaccine communication materials

Myth buster from London Borough of Merton [COVID Myth bustersBC.pdf](https://www.merton.gov.uk/media/1111111/COVID_Myth_bustersBC.pdf) (merton.gov.uk)

<https://www.gov.uk/government/publications/covid-19-vaccination-of-children-and-young-people-aged-12-to-17-years-jcvi-statement/jcvi-statement-on-covid-19-vaccination-of-children-and-young-people-aged-12-to-17-years-15-july-2021>

GLA Covid resources - COVID-19 resources and services in your language | London City Hall

Guidance on CEV 16th August 2021

Guidance on protecting people who are clinically extremely vulnerable from COVID-19 - GOV.UK (www.gov.uk)

Leaflet for CYP [COVID-19 vaccination for children and young people](#) - Health Publications

Greenbook updated 30th July [COVID-19 Greenbook chapter 14a](#) (publishing.service.gov.uk)

Learning Disability Register Health Checks and CEV

NHS England » Annual health checks easy read

Be healthy, be happy, don't miss out! – YouTube

Mencap Join The Learning Disability Register - Don't

Miss Out | Mencap **NB: NOT JUST LD and CAN BE
FROM BIRTH NOT JUST 14 YEARS OLD**

Supporters Guide online version (003).pdf
(mencap.org.uk)

See also People at higher risk from coronavirus
(COVID-19) - NHS (www.nhs.uk)



Easy Read Resources

Easy Read Accessible Information About Coronavirus (COVID-19) For People With A Learning Disability, Families, Carers and Support Workers| Mencap

Get the facts about the COVID-19 vaccine | London City Hall

COVID-19 vaccination: easy-read leaflets - GOV.UK (www.gov.uk)

COVID-19: guidance on protecting people defined on medical grounds as extremely vulnerable - GOV.UK (www.gov.uk)

Guidance on protecting people most likely to get very poorly from coronavirus - Easy read (publishing.service.gov.uk)

SEND/CEV Resources

COVID-19: guidance on protecting people defined on medical grounds as extremely vulnerable - GOV.UK (www.gov.uk)

COVID-19 Support and Guidance | Council For Disabled Children

COVID-19 - Information and resources (challengingbehaviour.org.uk)

Important information about Covid-19 coronavirus for families with disabled children | Contact

COVID-19: guidance on shielding and protecting people defined on medical grounds as extremely vulnerable - GOV.UK (www.gov.uk)

NHS England Full Routine Vaccinations Schedule

The complete routine immunisation schedule (england.nhs.uk)

The routine immunisation schedule from Summer 2016				
Age due	Diseases protected against	Vaccine given and trade name		Usual site ¹
Eight weeks old	Diphtheria, tetanus, pertussis (whooping cough), polio and Haemophilus influenzae type b (Hib)	dTaIPV/Hib	Pediacel or Infanrix IPV Hib	Thigh
	Pneumococcal (13 serotypes)	Pneumococcal conjugate vaccine (PCV)	Prevenar 13	Thigh
	Meningococcal group B (MenB) ²	MenB ³	Bexsero	Left thigh
	Rotavirus gastroenteritis	Rotavirus	Rotarix	By mouth
Twelve weeks	Diphtheria, tetanus, pertussis, polio and Hib	dTaIPV/Hib	Pediacel or Infanrix IPV Hib	Thigh
	Rotavirus	Rotavirus	Rotarix	By mouth
	Diphtheria, tetanus, pertussis, polio and Hib	dTaIPV/Hib	Pediacel or Infanrix IPV Hib	Thigh
Sixteen weeks old	MenB ²	MenB ³	Bexsero	Left thigh
	Pneumococcal (13 serotypes)	PCV	Prevenar 13	Thigh
	Hib and MenC	Hib/MenC booster	Menitorix	Upper arm/ thigh
One year old	PCV booster	Prevenar 13		Upper arm/ thigh
	Measles, mumps and rubella (German measles)	MMR	MMR VaxPro ⁴ or Priorix	Upper arm/ thigh
	MenB ²	MenB booster ²	Bexsero	Left thigh
Two to eight years old (including children in school years 1, 2 and 3) ⁵	Influenza (each year from September)	Live attenuated influenza vaccine (LAV) ⁶	Fluac Tetra ⁷	Both nostrils
Three years four months old	Diphtheria, tetanus, pertussis and polio	dTaIPV	Infanrix IPV or Repeax	Upper arm
	Measles, mumps and rubella	MMR (check first dose given)	MMR VaxPro ⁴ or Priorix	Upper arm
Girls aged 12 to 15 years	Cervical cancer caused by human papillomavirus (HPV) types 16 and 18 (and genital warts caused by types 6 and 11)	HPV (two doses 6-24 months apart)	Gardasil	Upper arm
	Tetanus, diphtheria and polio	Td/IPV (check MMR status)	Revalid	Upper arm
Fourteen years old (school year 10)	Meningococcal groups A, C, W and Y disease	MenACWY	Nimenrix or Menveo	Upper arm
65 years old	Pneumococcal (23 serotypes)	Pneumococcal polysaccharide vaccine (PPV)		Upper arm
65 years of age and older	Influenza (each year from September)	Inactivated influenza vaccine	Multiple	Upper arm
70 years old	Shingles	Shingles	Zostavax ⁸	Upper arm ⁹

¹ Where two or more injections are required at once, these should ideally be given in different limbs. Where this is not possible, injections in the same limb should be given 2 cm apart. For more details, see Chapter 4 and 11 in the Green Book. All injected vaccines are given intramuscularly unless stated otherwise.

² Only for infants born on or after 1 May 2015.

³ Certain vaccine providers.

⁴ LAV (live attenuated influenza vaccine) is contraindicated and child is in a clinical risk group, use inactivated flu vaccine.

⁵ All vaccinees aged up to 31 August 2016, and also including primary school aged children in the pilots.

⁶ This can be administered subcutaneously for immunosuppressed vaccinees.

All vaccines can be ordered from www.immform.dh.gov.uk free of charge except influenza for adults and Pneumococcal polysaccharide vaccine.

Selective immunisation programmes				
Target group	Age and schedule	Disease	Vaccines required	
Babies born to hepatitis B infected mothers	At birth, four weeks, eight weeks and at one year ¹	Hepatitis B	Hepatitis B vaccine (Engerix B / HibvaxPro)	
Infants in areas of the country with TB incidence >= 40/100,000	At birth	Tuberculosis	BCG	
Infants with a parent or grandparent born in a high incidence country	At birth	Tuberculosis	BCG	
Pregnant women	During flu season At any stage of pregnancy	Influenza	Inactivated flu vaccine	
Pregnant women	From 20 weeks gestation ²	Pertussis	dTaIPV (Boostrix-IPV or Repeax)	

¹ See text for details to exclude infection.

² When the annual incidence of TB is >= 40/100,000.

³ www.gov.uk/government/uploads/system/uploads/attachment_data/file/295050/Infected_TB_Surveillance_2013_Data_High_and_Low_Incidence_Tables_-_2.pdf

⁴ Can be given from 16 weeks but usually offered after the anomaly scan.

Additional vaccines for individuals with underlying medical conditions

Medical condition	Diseases protected against	Vaccines required ¹
Asplenia or splenic dysfunction (including sickle cell and coeliac disease)	Meningococcal groups A, B, C, W and Y Pneumococcal Haemophilus influenzae type b (Hib) Influenza	Hib/MenC MenACWY MenB PPV (from two years of age) Annual flu vaccine
Cochlear implants	Pneumococcal	PCV13 (up to five years of age) PPV (from two years of age)
Chronic respiratory and heart conditions ² (such as severe asthma, chronic pulmonary disease, and heart failure)	Pneumococcal Influenza	PCV13 (up to five years of age) PPV (from two years of age) Annual flu vaccine
Chronic neurological conditions ³ (such as Parkinson's or motor neurone disease, or learning disability)	Pneumococcal Influenza	PCV13 (up to five years of age) PPV (from two years of age) Annual flu vaccine
Diabetes ⁴	Pneumococcal Influenza	PCV13 (up to five years of age) PPV (from two years of age) Annual flu vaccine
Chronic kidney disease (CKD) ⁵ (including haemodialysis)	Pneumococcal (stage 4 and 5 CKD) Influenza (stage 3, 4 and 5 CKD) Hepatitis B (stage 4 and 5 CKD)	PCV13 (up to five years of age) PPV (from two years of age) Annual flu vaccine
Chronic liver conditions ⁶	Pneumococcal Influenza Hepatitis A Hepatitis B	PCV13 (up to five years of age) PPV (from two years of age) Annual flu vaccine Hepatitis A Hepatitis B
Haemophilia	Hepatitis A Hepatitis B	Hepatitis A Hepatitis B
Immunosuppression due to disease or treatment ⁷	Pneumococcal Influenza	PCV13 (up to five years of age) PPV (from two years of age) Annual flu vaccine
Complement disorders ⁸ (including those receiving complement inhibitor therapy)	Meningococcal groups A, B, C, W and Y Pneumococcal Haemophilus influenzae type b (Hib) Influenza	Hib/MenC MenACWY MenB PCV13 (to any age) PPV (from two years of age) Annual flu vaccine

¹ Check relevant chapter of green book for specific schedule.

² To age 65 in severe immunosuppression.

³ Consider annual influenza vaccination for household members and those who care for people with these conditions.

NHS Vaccinations Links Tips and Tricks

How you will be contacted for your coronavirus (COVID-19) vaccination - NHS (www.nhs.uk)

Vaccination tips for parents - NHS (www.nhs.uk)

MMR Vaccine: Up to the 25th birthday.

2 doses of the MMR vaccine. If you have not previously had 2 doses of MMR you can still ask your GP for the vaccine.



NHS vaccinations and when to have them - NHS (www.nhs.uk)

Vaccinations for School aged and older CYP

We are encouraging both new and current students to make sure they're up to date with their measles, mumps and rubella (MMR) and MenACWY vaccines so they can enjoy their university experience knowing they aren't at risk of catching measles and ensuring that they are protecting themselves from meningococcal disease.

Students who have not yet have the MenACWY vaccine remain eligible up to their 25th birthday.

Students should contact their GPs to have the MMR and MenACWY vaccine before starting university or college. If that's not possible, they should have it as soon as they can after they arrive.

NHS vaccination schedule	
Babies under 1 year old	
Age	Vaccines
8 weeks	6-in-1 vaccine Rotavirus vaccine MenB
12 weeks	6-in-1 vaccine (2nd dose) Pneumococcal (PCV) vaccine Rotavirus vaccine (2nd dose)
16 weeks	6-in-1 vaccine (3rd dose) MenB (2nd dose)

Children aged 1 to 15	
Age	Vaccines
1 year	Hib/MenC (1st dose) MMR (1st dose) Pneumococcal (PCV) vaccine (2nd dose) MenB (3rd dose)
2 to 10 years	Flu vaccine (every year)
3 years and 4 months	MMR (2nd dose) 4-in-1 pre-school booster
12 to 13 years	HPV vaccine
14 years	3-in-1 teenage booster MenACWY

MHRA and Off Label/ Licence Vaccination

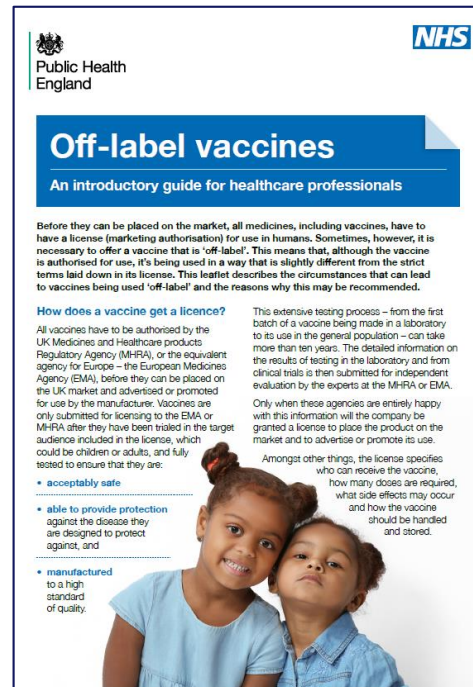
“All routine vaccines currently used in the UK are licensed to be placed on the market. So, as well as having the data to support their safety and efficacy in accordance with the license, it means they have been manufactured to a high standard and have undergone independent batch testing before release. Sometimes, however, clinical experts on JCVI recommend that the vaccine should be used in people who were not included in the initial trials or recommend that the number or timing of the doses is different from that used in the trials. As these situations were not specified in the license this would mean the vaccine was being used ‘off-label’.....For the national vaccine programme, these decisions are usually taken by the JCVI. Most commonly, they involve recommending that a vaccine that is licensed for one group of patients can be used ‘off-label’ in another age group, or that a vaccine may be used at a different schedule from that in the license.”

See Below for more guidance on how this works in practice

[MHRA guidance on coronavirus \(COVID-19\) - GOV.UK \(www.gov.uk\)](https://www.gov.uk/government/publications/legal-requirements-for-childrens-vaccination)

<https://www.gov.uk/drug-safety-update/off-label-or-unlicensed-use-of-medicines-prescribers-responsibilities#prescribing-in-a-patients-best-interests>

[https://www.gov.uk/government/publications/legal-requirements-for-childrens-](https://www.gov.uk/government/publications/legal-requirements-for-childrens-vaccination)

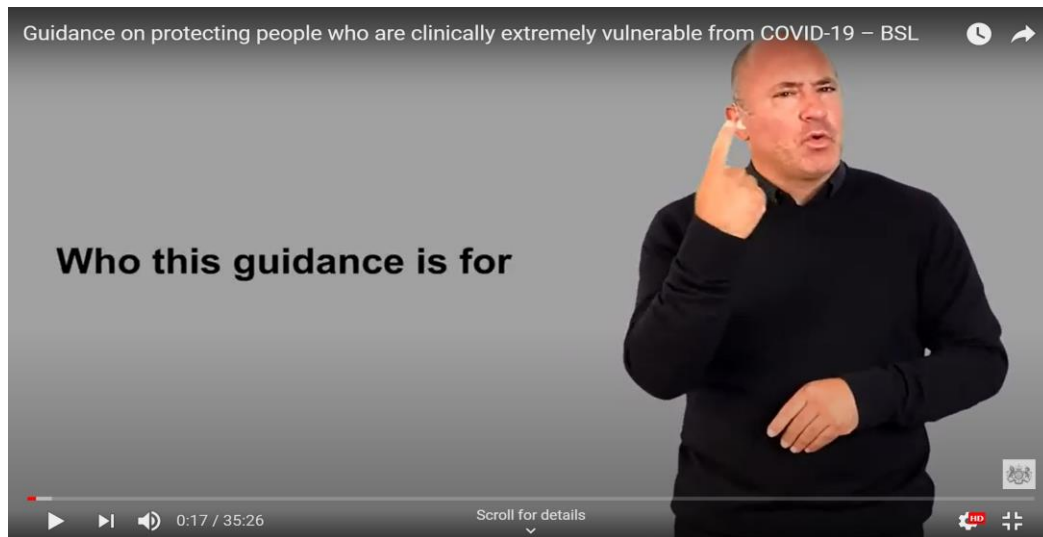


Off-label vaccines - an introductory guide for healthcare professionals (publishing.service.gov.uk)

DHSC You Tube Channel

Guidance on protecting people who are clinically extremely vulnerable from COVID-19 - Audio – YouTube

Guidance on protecting people who are clinically extremely vulnerable from COVID-19 – BSL - YouTube

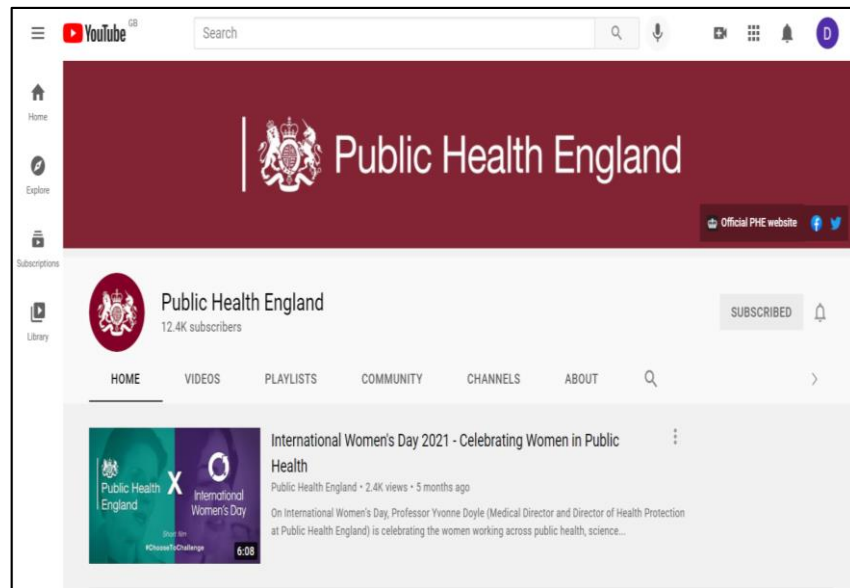


PHE You Tube Channel

Public Health England - GOV.UK
(www.gov.uk)

Public Health England – YouTube

COVID-19 vaccine guide for women of
childbearing age or are planning a
pregnancy – YouTube

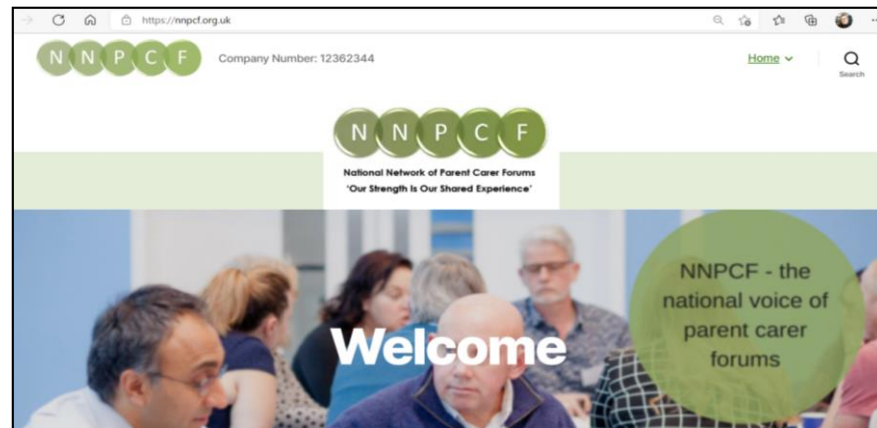


National Network of Parent & Carer Forums

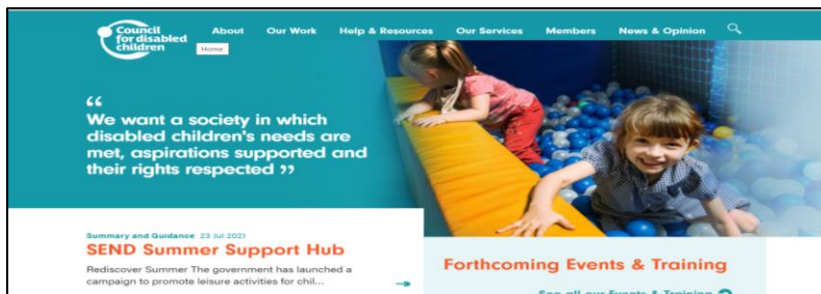
National Network of Parent Carer Forums nnpcf.org.uk

Information and Resources (nnpcf.org.uk)

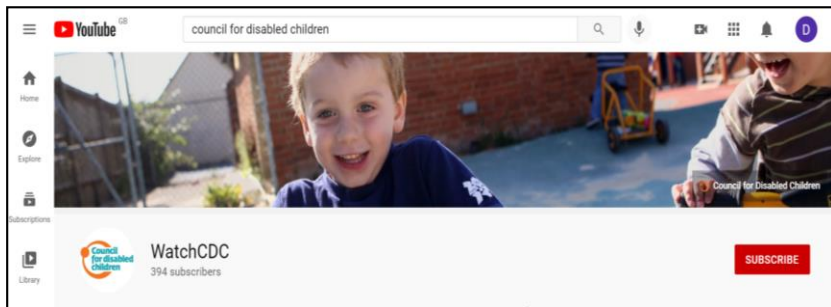
Covid 19 vaccinations for children – an update – National Network of Parent Carer Forums C.I.C (nnpcf.org.uk)



Council for Disabled Children



[Welcome to CDC | Council For Disabled Children](#)



[WatchCDC - YouTube](#)

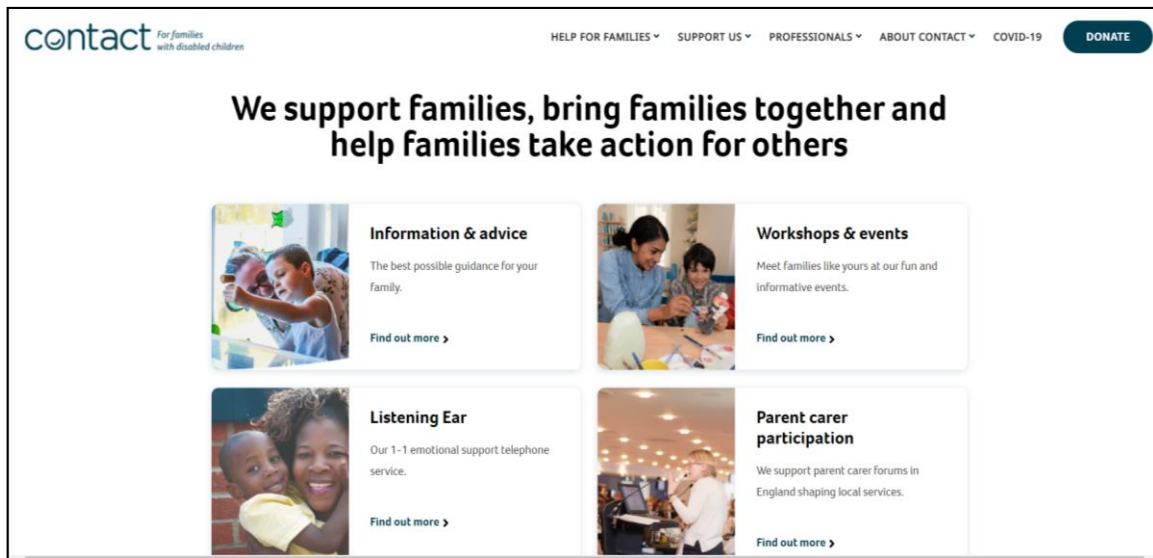


[Supporting families with Clinically Extremely Vulnerable Children Webinar – YouTube CDC](#)

CONTACT

Contact - for families with disabled children | Contact

FAQs on Covid-19 vaccines for children | Contact



MENCAP

Learning Disability - Down's Syndrome - Williams syndrome | Mencap

Coronavirus (COVID-19): Vaccine | Mencap

What Is Coronavirus (COVID-19)? An Accessible Definition | Mencap

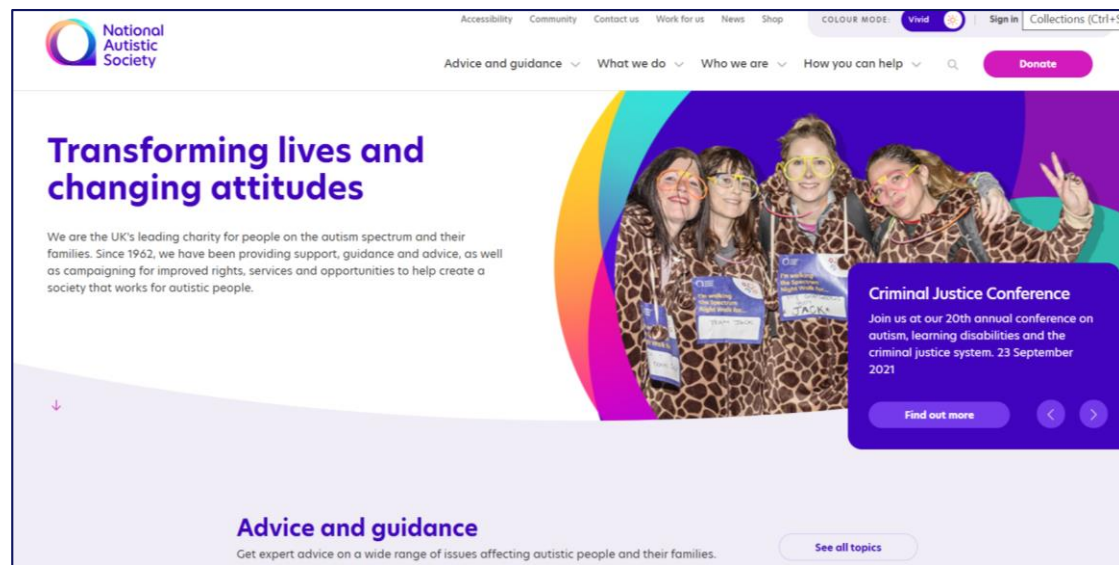
Coronavirus (COVID-19) Accessible Easy Read Information About Self-Isolating, Social Distancing and Face Coverings or Masks | Mencap



National Autistic Society

[Health \(autism.org.uk\)](https://autism.org.uk)

[Priority groups for vaccines \(autism.org.uk\)](https://autism.org.uk)



Next Steps

Thank you for coming along today

We are working out the best way to share the recording with you.

Slides will be shared in a pdf shortly after the session.

Whilst every care has been taken to ensure this is up to date the guidance does change so please make sure you check the NHS, Public Health England and Department for health and Social Care Websites.

If you want a copy of the slides please email Dan.Devitt@PHE.gov.uk